



## **Auditee's Guide - CheckAud for SAP Systems 2023.1**

Document version: AG.CASA.2023.1.2507.01

A product of IBS Schreiber GmbH





# Table of contents

<b>Chapter I Usage of the Auditee's Guide CheckAud 2023.1</b>	<b>5</b>
I - 1 Live data presentation of CheckAud 2023.1 .....	6
I - 2 Authorization audit with CheckAud 2023.1 .....	6
<b>Chapter II Installation notes</b>	<b>7</b>
II - 1 System requirements .....	8
II - 2 Recommended hardware .....	8
II - 3 Use in virtual environments / CITRIX / Terminal Server .....	8
II - 4 Use of anti-virus software products .....	9
<b>Chapter III Installing CheckScan 2023.1</b>	<b>11</b>
<b>Chapter IV Rights required in the SAP-System</b>	<b>17</b>
IV - 1 Table set AUTH .....	18
IV - 2 Table set IBS_AUTH_ADVANCED .....	19
IV - 3 Table set IBS_BW .....	19
IV - 4 Table set IBS_CO .....	19
IV - 5 Table set IBS_FI .....	20
IV - 6 Table set IBS_GDPR .....	20
IV - 7 Table set IBS_MM .....	20
IV - 8 Table set IBS_HCM .....	20
IV - 9 Table set IBS_ISU .....	21
IV - 10 Table set IBS_SD .....	21
IV - 11 Table set IBS_SYSTEM .....	21
IV - 12 Authorizations for reading parameter values .....	21
IV - 13 Authorizations for reading the default org level values .....	22
IV - 14 Authorization for reading anonymized user statistics .....	22
IV - 15 Authorization for reading personalized user statistics .....	22
IV - 16 Predefined SAP role for the RFC interface user (Scan-User) .....	23
<b>Chapter V Rights required on the HANA database</b>	<b>25</b>
V - 1 General authorizations for reading tables and views .....	26
V - 2 Table set AUTH .....	26
V - 3 Table set IBS_System .....	27
V - 4 Predefined HANA database role for the technical user (Scan-User) .....	27

<b>Chapter VI CheckScan 2023.1</b>	<b>29</b>
VI - 1   Creating a new system connection (ABAP-Scan) .....	30
1.1 Select the table sets .....	31
1.2 Reading out parameters .....	32
1.3 Reading out default values for org levels .....	33
VI - 2   Creating a new system connection (HANA-Scan) .....	34
2.1 Select the table sets .....	36
VI - 3   Creating a snapshot (ABAP- & HANA-Scan) .....	37
<b>Chapter VII Technical appendix</b>	<b>43</b>
VII - 1   Property and copyright .....	44
VII - 2   Using the software .....	44
VII - 3   Licenses for third-party providers .....	44
3.1 RADCONTROLS FOR WPF .....	44
3.2 EPPLUS .....	44
3.3 DOTNETZIP .....	51
3.4 ANTLR 3 .....	52
3.5 NPGSQL .....	52
3.6 PROTOBUF-NET .....	52
3.7 MATH.NET NUMERICS LICENSE (MIT/X11) .....	53
3.8 IQToolkit .....	53
3.9 Newtonsoft.Json (MIT) .....	54
<b>Chapter VIII Liability</b>	<b>57</b>

## **Chapter I - Usage of the Auditee's Guide CheckAud 2023.1**

# I Usage of the Auditee's Guide CheckAud 2023.1

This document describes the technical preliminaries for a scan with CheckAud 2023.1 in preparation for a live data demonstration of CheckAud 2023.1 or for an authorization audit.

## I - 1 Live data presentation of CheckAud 2023.1

What you will get

- you'll get a live summary, which security gaps you may have concerning your SAP authorization concept
- this audit will take about 2 hours and will take place at your site
- we'll check, if your authorization concept fits legal or your internal audit requirements
- this audit will be done by a qualified consultant
- you'll learn about the advantages using the audit software CheckAud®
- there are no obligations

How does it work

- you make an appointment with our sales department
- you prepare the needed SAP data using our CheckAud® scan module
- you deliver the created SAP data during the appointment at your site, there is no need to send us any information earlier
- during the presentation, our consultant will use the created SAP data for analysis using CheckAud®
- with predefined authorization checks our consultant will prepare results and reports including a risk assessment and possible solutions
- you'll receive detailed results in form of reports and tabular listings
- after the presentation, all used and created data referring your company will be deleted safely

In preparation for the live presentation of CheckAud® it is necessary, that all data will be **created before the actual appointment!**

## I - 2 Authorization audit with CheckAud 2023.1

For preparation of an authorization audit please follow the steps below to install the Scan module and to create a snapshot. One of our consultants will contact you in time to provide you with detailed information.

## Chapter II - Installation notes

## II Installation notes

### II - 1 System requirements

To install CheckAud 2023.1, you require one of the Windows versions listed in the table below. The use of a 64-bit version of Windows is recommended but is not mandatory. In addition, Microsoft .net Framework 4.8 is a minimum requirement for running CheckAud 2023.1.

Version	Service Pack / Note	Remarks
Windows 8.1	-	only Pro und Enterprise
Windows 10	since 1607 inkl. 2016 LTSC & 2019 LTSC	only Pro und Enterprise
Windows 11	-	only Pro und Enterprise
Windows Server 2012	-	not „Server Core“
Windows Server 2012 R2	-	not „Server Core“
Windows Server 2016	RTM (=1607), 1709 & 1803	not „Server Core“
Windows Server 2019	since 1809 inkl. 1903, 1909, 2004 & 20H2	not „Server Core“
Windows Server 2022	-	not „Server Core“

If you intend to post-edit the evaluation results from CheckAud, we recommend installing a Microsoft Office package (Office 2010 or later).

### II - 2 Recommended hardware

We recommend at least 4 GB of physical memory (RAM) to use CheckAud 2023.1. For fast analysis of larger SAP systems (containing several thousand users or several hundred thousand authorizations, for example), a minimum of 6 GB is recommended. The use of the latest Intel Core processors is recommended but is not required. The installation path should be on a local hard disk. The use of an SSD is not required.

### II - 3 Use in virtual environments / CITRIX / Terminal Server

Although CheckAud 2023.1 can generally be used on network storage systems, access to NAS/SAN systems impairs performance significantly due to the large amounts of data to be analyzed. For this reason, we recommend installing CheckAud 2023.1 on a physical hard disk connected directly to the system. For installation in a virtual environment, you must ensure that the operating system has exclusive physical access to the main memory mentioned above.

An installation of CheckScan 2023.1 or CheckAud 2023.1 on a CITRIX or terminal server environment is possible. A local installation of the CheckAud database on each server has to be ensured because CheckAud doesn't support multi user access on the database and UNC paths.



**A simultaneous access of multiple users on one CheckAud database is not recommended.**

## **II - 4      Use of anti-virus software products**

As a basic principle, the use of “on-access” virus scanners poses no problem for 2023.1. However, for reasons of performance and stability, the host process of the internal database and its data directory must be excluded from the scan. In isolated cases, the virus scanner may have to be fully uninstalled (or switched to a newer version or different product) to use CheckAud 2023.1.



## Chapter III - Installing CheckScan 2023.1

### III Installing CheckScan 2023.1

The data capture module from the SAP system, the scan module, is provided separately as an installation package. Proceed as follows for the installation:

You can select your desired language for the installation:

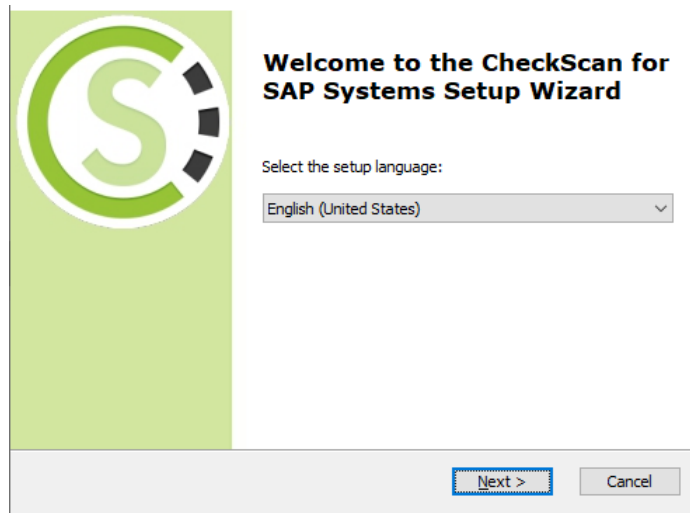


Figure 1 - Selecting the language for the installation

Choose *Next* to begin the installation with the setup wizard

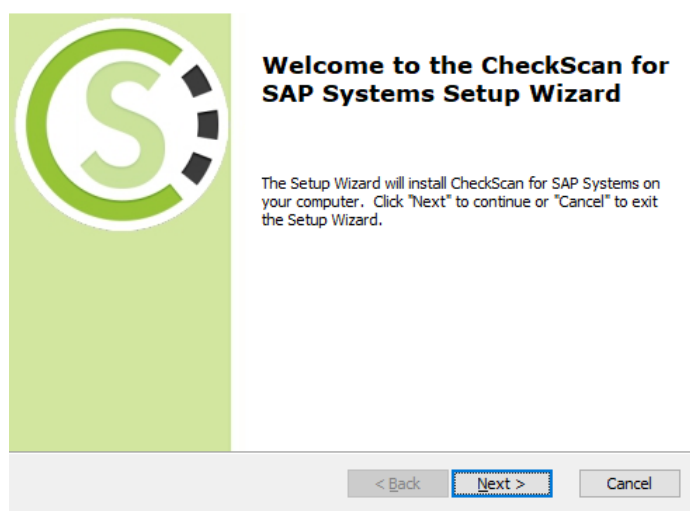


Figure 2 - Starting the installation wizard

Confirm the notes to the actual release with *Next*:

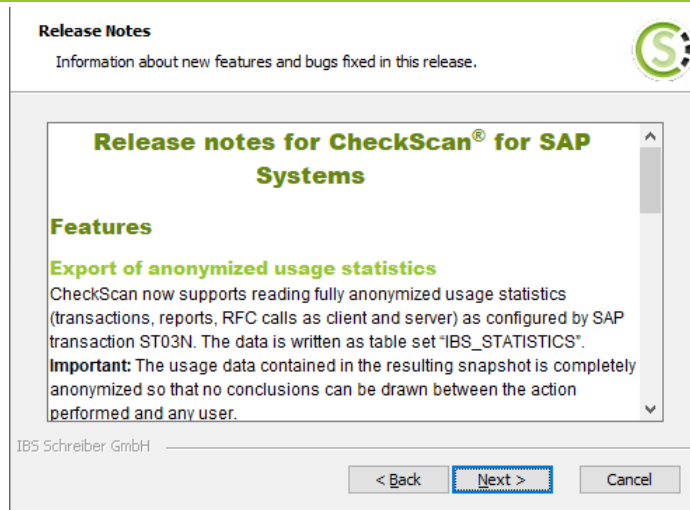


Figure 3 - Notes to the release

Select the radio button *I accept the terms in the licensing agreement*

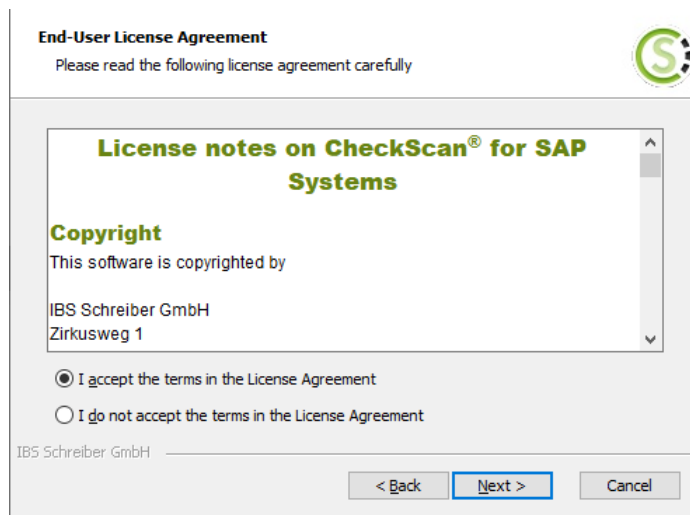


Figure 4 - Accept license agreements

Choose *Next*

The following dialog asks, how the installation should be executed, only for the logged on user or for all users on this computer:

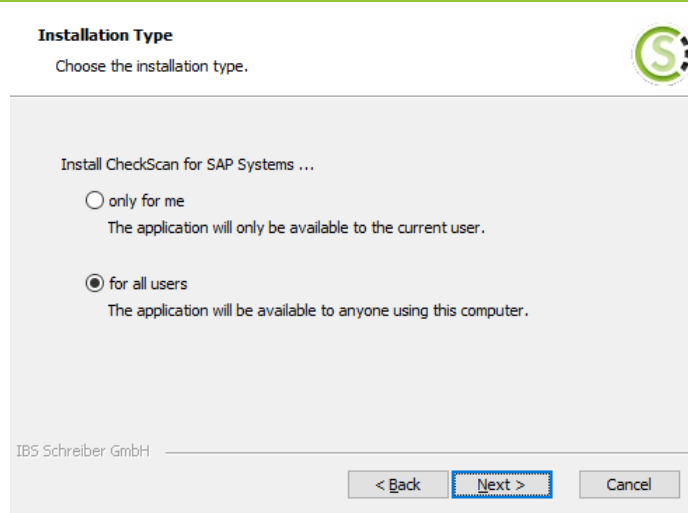


Figure 5 - Choose installation mode

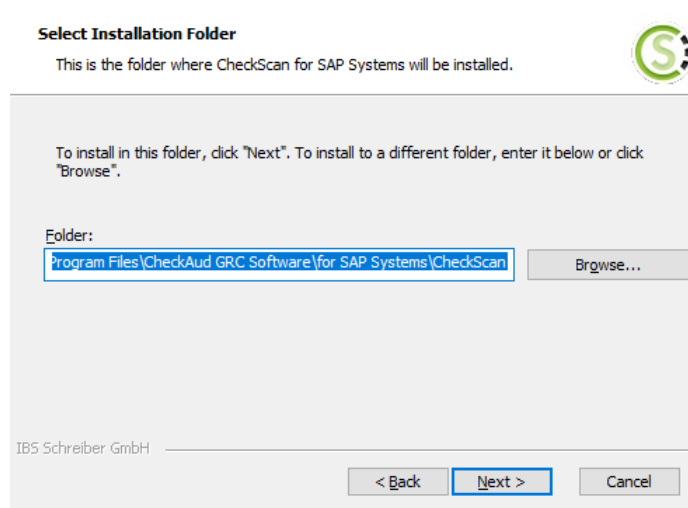
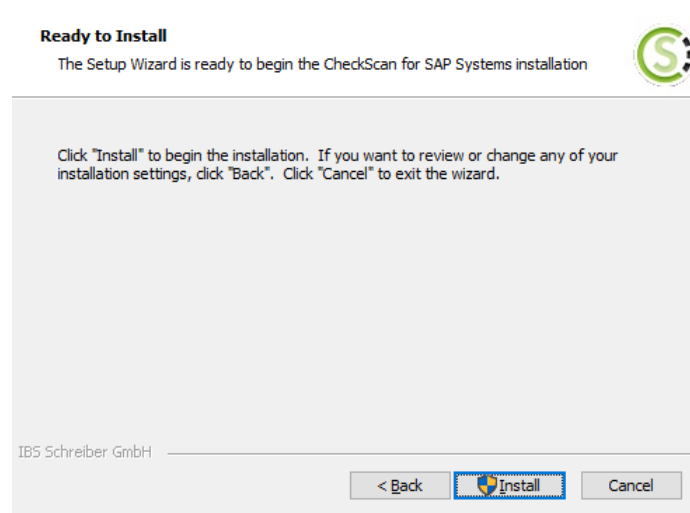
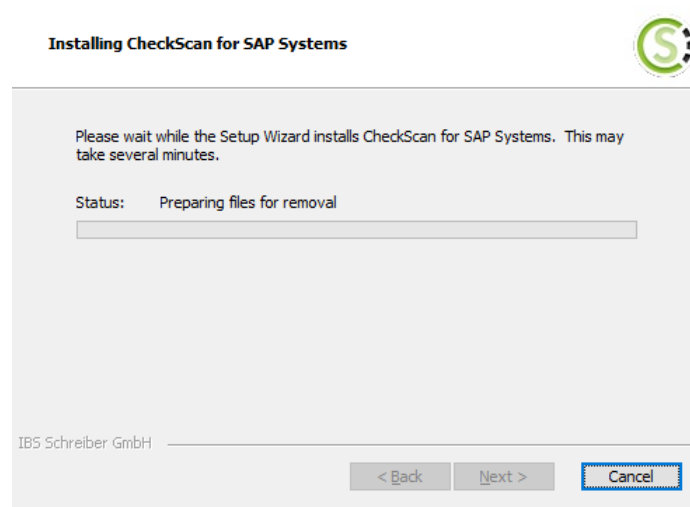


Figure 6 - Choose installation path

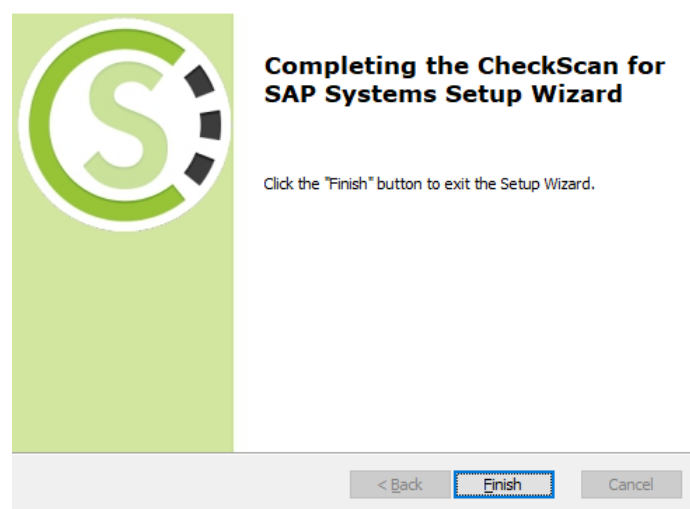
You can select the installation path of your choice. As a default option, the scan module is installed under:

*C:\Program Files\CheckAud GRC Software\for SAP Systems\CheckScan\*

Choose *Install* to start the installation.

**Figure 7 - Completing the preparations for the installation****Figure 8 - Performing the installation**

Successfully completed CheckScan installation:

**Figure 9 - Installation complete**





## Chapter IV - Rights required in the SAP-System

## IV Rights required in the SAP-System

The following chapters describe the needed and the optional authorizations for the technical communications user in the SAP-System.

New authorization values in CheckAud 2023.1 will be marked in **bold, red**.

### IV - 1 Table set AUTH

Users log onto the SAP system with CheckScan 2023.1 via the RFC interface. Note that CheckScan supports only release level 7.00 or later of the software component SAP\_BASIS. Users need a user account (system user) with the following rights:

<p><b>Authorization object:</b> S_RFC</p> <p><b>Activity:</b> 16</p> <p><b>RFC_NAME:</b>  AUTH_TRACE_GET_USOBHASH, DDIF_FIELDINFO_GET, EM_GET_NUMBER_OF_ENTRIES,  GET_SYS_COMP_REL, RFCPING, RFC_FUNCTION_SEARCH,  RFC_GET_FUNCTION_INTERFACE, RFC_METADATA_GET,  RFC_METADATA_GET_TIMESTAMP, RFC_PING, RFC_READ_TABLE, RFC_SYSTEM_INFO,  SNC_GET_MY_INFO, SYSTEM_RESET_RFC_SERVER</p> <p><b>RFC_TYPE:</b> FUNC</p>
<p><b>Authorization object:</b> S_TABU_NAM</p> <p><b>Activity:</b> 03</p> <p><b>Table:</b>  AGR_1016, AGR_AGRS, AGR_DEFINE, AGR_FLAGS, AGR_TEXTS, AGR_USERS, CVERS,  CVERS_REF, DD02L, DD02T, DD03L, DD03M, DD03T, DD04T, DEVACCESS,  GTB_ROLE_DEF, GTB_ROLE_DEF_T, GTB_ROLE_TABLE, GTB_ROLE_VALUE,  <b>HTTP_WHITE_LIST</b>, <b>ICFDOCU</b>, <b>ICFSERVICE</b>, <b>ICFSERVLOC</b>, PRGN_CUST,  <b>SFW_ACTIVE_B2</b>, <b>SLDW_ELEMENTS</b>, <b>SLDW_HEADER</b>, <b>SLDW_HEADERT</b> T055, T055F,  T055G, T055T, T77S0, TAPPL_LOCK, TDDAT, TOBC, TOBCT, TOBJ, TOBJ_CHK_CTRL_R,  TOBJ_CHK_CTRL_RH, TOBJ_OFF, TOBJT, TRDIR, TSTC, TSTCT, USER_ADDRS,  USGRP_USER, USGRPPT, USOBAUTHINACTIVE, USOBHASH, USORG, USR_CUST, <b>USRACL</b>,  USR02, USR06, USR10, USR11, USR13, USR21, USREFUS, UST04, UST10C, UST10S,  UST12, WDY_COMPONENT,  WDY_COMPONENTT, <b>/CHECKAUD/FIORI_PROPERTIES</b>  , <b>/IWFND/I_MED_SRH</b>, <b>/IWBEP/I_MGW_SRT</b>, /IWEPI/I_MGW_SRT, /IWFND/I_MED/SRT</p>

1 As per SAP Note 460089 (Minimum authorization profile for external RFC programs), authorization for the function module SYSTEM\_RESET\_RFC\_SERVER is always required  
<https://launchpad.support.sap.com/#/notes/460089>

To read more table sets in addition to the standard table set AUTH, separate authorizations are required for each individual table set in the SAP system. The permissions required for each table set are listed below:

## IV - 2 Table set IBS\_AUTH\_ADVANCED

**Authorization object:** S\_TABU\_NAM

**Activity:** 03

**Table:**

AGR\_BUFFI, AGR\_1251, AGR\_1252, **AGR\_APPL\_VARS, AGR\_HIER, AGR\_HIERT,**  
ORGCRACT, ORGCRATT, ORGCRATT\_T, ORGCRFLD, ORGCRIT, ORGCRIT\_T, USOBT\_C,  
USOBX\_C, **USOBX\_CD**

## IV - 3 Table set IBS\_BW

**Authorization object:** S\_TABU\_NAM

**Activity:** 03

**Table:**

RSECBIAU, RSECTXT, RSECUSERAUTH

## IV - 4 Table set IBS\_CO

**Authorization object:** S\_TABU\_NAM

**Activity:** 03

**Table:**

CEPC, CSKS, TKA01, TKA02

## IV - 5 Table set IBS\_FI

**Authorization object:** S\_TABU\_NAM

**Activity:** 03

**Table:**

FM01, FM01T, NRIV, T001, T001B, T003, T003T, T004, T004T, T010P, T014T, T043, T880, TGSB, TGSBT, TNROT, TNRO

## IV - 6 Table set IBS\_GDPR

**Authorization object:** S\_TABU\_NAM

**Activity:** 03

**Table:**

SXC\_ATTR, SXC\_CLASS, SXC\_EXIT, SXS\_ATTRT, SFW\_SW\_BF, SFW\_SWITCH\_STATE, SFW\_SWITCHT, T77PADDUR\_DEF, T77PADDUR\_KEY, T77PADDURATION

## IV - 7 Table set IBS\_MM

**Authorization object:** S\_TABU\_NAM

**Activity:** 03

**Table:**

T001L, T024E, T024W, T024Z, T025, T030, T134

## IV - 8 Table set IBS\_HCM

**Authorization object:** S\_TABU\_NAM

**Activity:** 03

**Table:**

T001P, T500P, T501T, T503T, T526, T569U, T582A, T582S, T585A, T585B, T585C, T591A, T591S, T599R, T77EO, T77UA

## IV - 9 Table set IBS\_ISU

**Authorization object:** S\_TABU\_NAM

**Activity:** 03

**Table:**

EDSC, EPREI, ETRF, ETTA, TE069, TE218, TE265, TE408, TE669

## IV - 10 Table set IBS\_SD

**Authorization object:** S\_TABU\_NAM

**Activity:** 03

**Table:**

TVKO, TVKOT, TVKWZ, TVTW, TVTWT

## IV - 11 Table set IBS\_SYSTEM

**Authorization object:** S\_TABU\_NAM

**Activity:** 03

**Table:**

ADIRACCESS, CCCFLOW, **DB6AUDITHD**, DD02L, DD09L, DLV\_SYSTC, ORGCRAC, **HTTP\_WHITE\_LIST**, PAT03, RFCCBWHITELIST, RFCCBWHITELIST\_A, RFCDES, **RFCDESSECU**, RFCDOC, RFCSYSACL, RFCTRUST, RSAUPROF, SEC\_POLICY\_ATTR, SEC\_POLICY\_RT, **SLDW\_ELEMENTS**, **SLDW\_HEADER**, **SLDW\_HEADERT**, SXPGCOSTAB, T000, TADIR, TBRG, TBRG\_AUTH, TBRG\_AUTHI, TBRGT, TCDOB, TMSCSYS, TMSPCONF, TPLOG, TRNSPACE, TRNSPACETT, USR01, USR05, USR40, USR41\_MLD

## IV - 12 Authorizations for reading parameter values

This function will only be available since SAP Releases 7.40!

**Authorization object:** S\_RFC

**Activity:** 16

**RFC\_NAME:**

PFL\_GET\_SERVER\_PARAM\_VALUES

<b>RFC_TYPE:</b>	FUNC
<b>Authorization object:</b>	S_TABU_NAM
<b>Activity:</b>	03
<b>Table:</b>	DOKIL, DOKTL, TPFET, TPFHT, TPFID
<b>Authorization object:</b>	S_RZL_ADM
<b>Activity:</b>	03

### IV - 13 Authorizations for reading the default org level values

<b>Authorization object:</b>	S_TABU_NAM
<b>Activity:</b>	03
<b>Table:</b>	DD07T, FM01, FM01T, LLOCT, LLOCTT, RFCDES, RFCDOC, T001, T001W, T004, T004T, T014, T014T, T024, T024E, T077D, T077K, T077X, T077Y, T16FG, T16FH, T300, T300T, T500P, T501, T501T, T503K, T503T, T549A, T549T, T582A, T582S, T750E, T750F, T750K, T777P, T778P, T880, TACT, TACTT, TBKK01, TBKK01T, TBKK80, TBKK80T, TF150, TF151, TGSB, TGSBT, TKA01, TKEB, TKEBT, TSPA, TSPAT, TTDS, TTDST, TVAK, TVAKT, TVBUR, TVFK, TVFKT, TVGRT, TVKBT, TVKGR, TVKO, TVKOT, TVST, TVSTT, TVTW, TVTWT

### IV - 14 Authorization for reading anonymized user statistics

<b>Authorization object:</b>	S_RFC
<b>Activity:</b>	16
<b>RFC_NAME:</b>	SWNC_COLLECTOR_GET_AGGREGATES
<b>RFC_TYPE:</b>	FUNC

### IV - 15 Authorization for reading personalized user statistics

In addition to the permissions from Chapter IV-14 (Reading anonymized user statistics), the following permissions are also required:

Authorization object: S\_RFC

Activity: 16

RFC\_NAME:  
AUTHORITY\_CHECK

RFC\_TYPE: FUNC

Authorization object: S\_TOOLS\_EX

AUTH = S\_TOOLS\_EX\_A

## IV - 16 Predefined SAP role for the RFC interface user (Scan-User)

In the customer section of the [www.checkaud.de](http://www.checkaud.de) website, you can download a predefined role for scan users. This SAP role includes the necessary authorizations for the SAP communication user that is used for scanning the SAP systems to be checked. The authorizations are limited to access of remote-capable SAP function modules, as well as to the SAP tables that are relevant for authorization evaluation.

The customer section on [www.checkaud.de](http://www.checkaud.de) provides the individual SAP roles for the newly added table sets in CheckScan for download.

**Note:**

Note that older SAP systems do not offer any functions for maintaining function modules. The authorizations are based on function groups. The roles provided in the customer area on [www.checkaud.de](http://www.checkaud.de) are based on the provision of authorizations via function modules. If you experience problems when creating snapshots in older SAP systems, check whether the roles that you imported are complete. It is entirely possible that the imported roles were not created completely in the SAP system. In this case, we recommend that you use the authorizations via the function groups.





## Chapter V - Rights required on the HANA database

## V Rights required on the HANA database

The following chapters describe the needed and the optional authorizations for the technical user on the HANA database.

New authorization values in CheckAud 2023.1 will be marked in **bold, red**.

### V - 1 General authorizations for reading tables and views

The following HANA database authorizations are used for logon and read access for tables and views.

```
system privilege: CATALOG READ;
catalog sql object "SYS"."DUMMY": SELECT;
catalog sql object "SYS"."M_DATABASE": SELECT;
catalog sql object "SYS"."TABLE_COLUMNS": SELECT;
catalog sql object "SYS"."VIEW_COLUMNS": SELECT;
catalog sql object "SYS"."REPOSITORY_REST": EXECUTE;
```

### V - 2 Table set AUTH

The following object authorizations are used for accessing relevant tables and views which are responsible for authorization regulation in the HANA database. These object authorizations are mandatory.

```
catalog sql object "SYS"."GRANTED_PRIVILEGES": SELECT;
catalog sql object "SYS"."GRANTED_ROLES": SELECT;
catalog sql object "SYS"."PRIVILEGES": SELECT;
catalog sql object "SYS"."REMOTE_USERS": SELECT;
catalog sql object "SYS"."ROLES": SELECT;
catalog sql object "SYS"."STRUCTURED_PRIVILEGES": SELECT;
catalog sql object "SYS"."USERGROUPS": SELECT;
catalog sql object "SYS"."USERGROUP_PARAMETERS": SELECT;
catalog sql object "SYS"."USERS": SELECT;
catalog sql object "SYS"."USER_PARAMETERS": SELECT;
catalog sql object "SYS"."OWNERSHIP": SELECT;
catalog sql object "SYS"."OBJECT_PRIVILEGES": SELECT;
catalog sql object "SYS"."OBJECTS": SELECT;
catalog sql object "SYS"."SCHEMAS": SELECT;
catalog sql object "SYS"."SYNONYMS": SELECT;
catalog sql object "_SYS_REPO"."PACKAGE_CATALOG": SELECT;
```

## V - 3 Table set IBS\_System

The following object authorizations are used for accessing relevant tables and views which are responsible for authorization regulation in the HANA database. These object authorizations are optional and must be used, when the table set *IBS\_SYSTEM* has been activated in the scan module.

```
catalog sql object "SYS"."AUDIT_POLICIES": SELECT;
catalog sql object "SYS"."CREDENTIALS": SELECT;
catalog sql object "SYS"."ENCRYPTION_ROOT_KEYS": SELECT;
catalog sql object "SYS"."INVALID_CONNECT_ATTEMPTS": SELECT;
catalog sql object "SYS"."M_CONNECTIONS": SELECT;
catalog sql object "SYS"."M_CUSTOMIZABLE_FUNCTIONALITIES": SELECT;
catalog sql object "SYS"."M_ENCRYPTION_OVERVIEW": SELECT;
catalog sql object "SYS"."M_HOST_INFORMATION": SELECT;
catalog sql object "SYS"."M_INIFILES": SELECT;
catalog sql object "SYS"."M_INIFILE_CONTENTS": SELECT;
catalog sql object "SYS"."M_INIFILE_CONTENT_HISTORY": SELECT;
catalog sql object "SYS"."M_PASSWORD_POLICY": SELECT;
catalog sql object "SYS"."M_PERSISTENCE_ENCRYPTION_STATUS": SELECT;
catalog sql object "SYS"."M_REMOTE_CONNECTIONS": SELECT;
catalog sql object "SYS"."M_SYSTEM_OVERVIEW": SELECT;
catalog sql object "SYS"."REMOTE_SOURCES": SELECT;
catalog sql object "_SYS_SECURITY"."_SYS_PASSWORD_BLACKLIST": SELECT;
```

## V - 4 Predefined HANA database role for the technical user (Scan-User)

In the customer section of the [www.checkaud.de](http://www.checkaud.de) website, you can download a predefined role for scan users. This HANA database role includes the necessary authorizations for the technical user that is used for scanning the HANA database to be checked. The authorizations are limited to access of tables and views that are relevant for authorization evaluation.

The customer section on [www.checkaud.de](http://www.checkaud.de) provides the individual HANA database roles for the optional table sets in CheckScan for download.

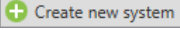



## Chapter VI - CheckScan 2023.1

## VI CheckScan 2023.1

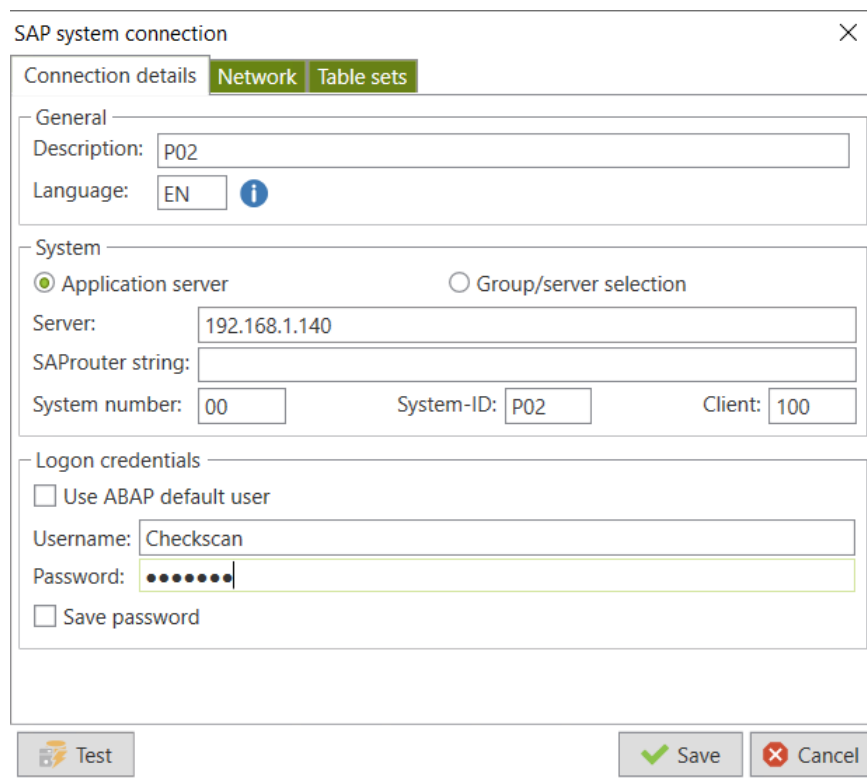
### VI - 1 Creating a new system connection (ABAP-Scan)

**Note:** To create system connections, you need detailed information about the SAP source systems to be exported (TCP/IP address, DNS address or SAProuter string, message server, server group, client, system number, etc.). This information should be available from SAP Basis administration.

You can use the button  to create a new connection to a SAP source system. Previously created source systems can be exported or imported using the  button. In this way, information about SAP source systems can be exchanged between different scan module installations.

This button can still be used to load the *SAPLOGON.INI* of an existing SAP LogOn installation. In the process, the connection information available in *SAPLOGON.INI* is copied and must only be supplemented by the client or the SAP communication user's login information.

The following dialog box for establishing a new system connection is displayed:



The dialog box is titled "SAP system connection" and has a close button (X) in the top right corner. It contains three tabs: "Connection details" (selected), "Network", and "Table sets".

**General section:**

- Description:
- Language:  with an information icon (i).

**System section:**

- Radio buttons: ☒ Application server, ☐ Group/server selection
- Server:
- SAProuter string:
- System number:  System-ID:  Client:

**Logon credentials section:**

- ☐ Use ABAP default user
- Username:
- Password:
- ☐ Save password

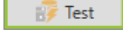
**Buttons:**

- Test (with a test icon)
- Save (with a green checkmark icon)
- Cancel (with a red X icon)


Figure 10 - Entering the connection information for an SAP system

<i>Description</i>	User-defined description of the source system to be created
<i>System</i>	Choose between a connection via application service or groups/server selection
<i>Server</i>	TCP/IP address or DNS address of the SAP host
<i>SAProuter-String</i>	Alternative connection via the SAProuter string

<i>System number</i>	Instance number of the SAP source system
<i>System-ID</i>	System designation of the SAP source system
<i>Client</i>	Client to be read out from the SAP source system
<i>Credentials</i>	Name and password of the SAP communication user for logging the scan module onto the source system (alternatively, the SAP standard user saved to the settings can be enabled here using the flag)
<i>Safe password</i>	As long as this flag has not been enabled, each time a snapshot is created, a prompt for the SAP communication user's password will appear

You can use the button  to check whether it is possible to connect to the source system using the saved information.

## VI - 1.1 Select the table sets

On the  **Table sets** tab, you can select additional table sets that are also relevant to this system connection in addition to the mandatory table set AUTH. The table sets:

- IBS\_AUTH\_ADVANCED,
- IBS\_BW,
- IBS\_FI,
- IBS\_GDPR
- IBS\_HCM,
- IBS\_ISU,
- IBS\_MM,
- IBS\_SD and
- IBS\_SYSTEM

are provided as predefined additional options. Your own table sets are displayed dynamically in the main menu item Table Sets (Tabellen-Sets) and on this tab.

The figure below shows the additional selection of the table set *IBS\_AUTH\_ADVANCED*:

:

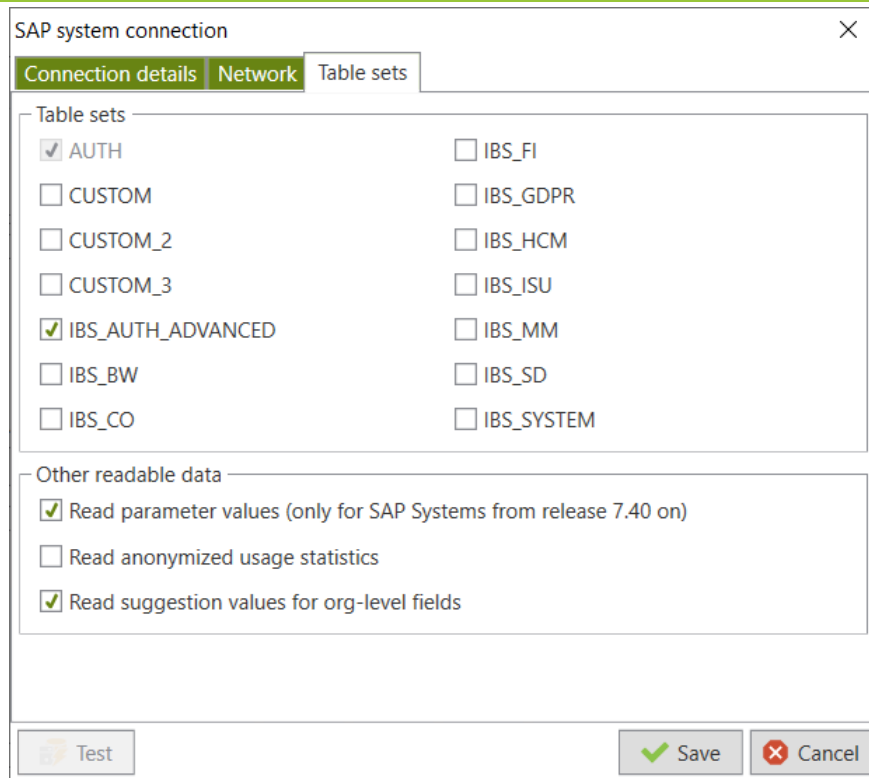



Figure 11 - Selecting additional table sets

Use the **Save** button to save the new system connection. In the *Table Set* column in the SAP source system overview, you can see which table sets have been enabled.

## VI - 1.2 Reading out parameters

In addition to table sets, the  **Table sets** tab also contains additional options for the information to be read out:



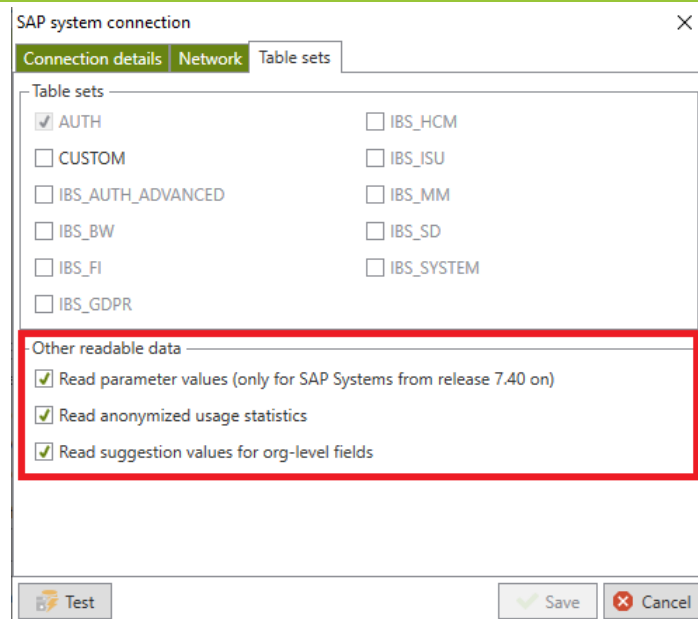



Figure 12 - Reading out parameter values

To check the parameters of an SAP system in CheckAud, the parameters must be read out. Readouts of parameter values are activated by default in CheckScan. As well as the existing authorizations for the AUTH table set, additional authorizations are required to read out the parameter values. You can read out system parameters only with SAP Release 7.40 or later. For older releases, it is not possible to read out parameter evaluations in CheckAud even when the option is set.

### VI - 1.3 Reading out default values for org levels

In addition to table sets, the  **Table sets** tab also contains additional options for the information to be read out:

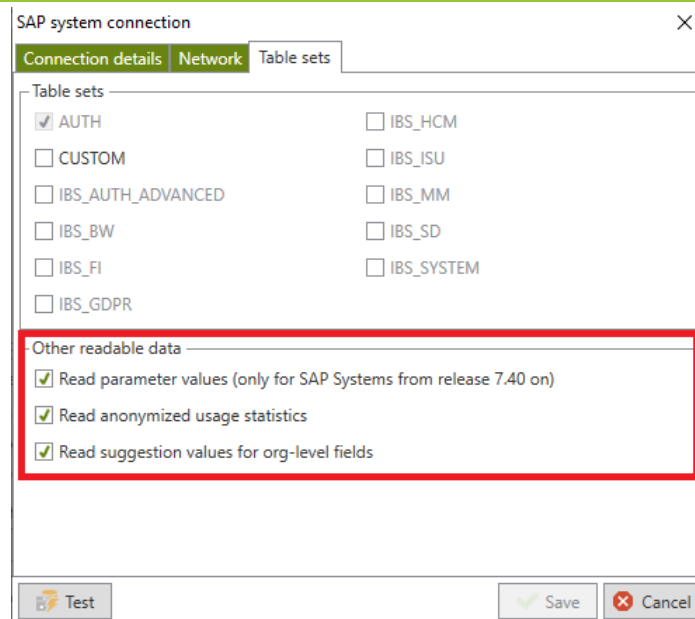


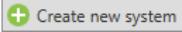
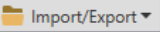
Figure 13 - Reading out default values for org levels

To be able to use the default values for organization levels (e.g. for company code BUKRS) in CheckAud, these values must also be read out. Readouts of the default values for org levels are activated by default in CheckScan. Additional authorizations are required on top of the existing authorizations for the AUTH table set.

**Note:** If the readout of the SAP system results in longer runtimes, this option for reading out the org levels can be disabled to improve the runtimes. As a result, however, the default values for org levels cannot be provided during the evaluation and must be entered manually.

## VI - 2 Creating a new system connection (HANA-Scan)

**Note:** To create system connections, you need detailed information about the HANA source database to be exported (TCP/IP address, DNS address, instance number, etc.). This information should be available from SAP Basis administration.

You can use the button  to create a new connection to a HANA source database. Previously created source systems can be exported or imported using the  button. In this way, information about HANA source database can be exchanged between different scan module installations.

This button can also be used to load the connection information from the SAP HANA Cockpit or the SAP HANA Studio. In the process, the connection information available from the SAP HANA Cockpit/Studio is copied and must only be supplemented by the communication user's login information.

The following dialog box for establishing a new system connection is displayed:

**HANA DB system connection**

Connection details **Network** Table sets

General

Description: HI2 (HANA DB)

System

Server: 192.168.250.216

Instance number: 00

Mode:   
☐ Single container   
☒ Multiple containers   
     ☒ Tenant database HI2   
     ☐ System database

Logon credentials

☐ Use HANA DB default user

Username: CASC2


Password: Password saved

☒ Save password


Test Save Cancel

Figure 14 - Entering the connection information for a HANA database

<i>Description</i>	User-defined description of the source system to be created
<i>Server</i>	TCP/IP address or DNS address of the HANA database
<i>Instance number</i>	Instance number of the HANA database
<i>Mode</i>	Mode selection of the HANA database whether the database works as a single container or multiple container. In that case, the tenant has to be specified
<i>Logon credentials</i>	Name and password of the communication user for logging the scan module onto the source system (alternatively, the HANA database standard user saved to the settings can be enabled here using the flag)
<i>Save password</i>	As long as this flag has not been enabled, each time a snapshot is created, a prompt for the communication user's password will appear

You can use the button  to check whether it is possible to connect to the source system using the saved information.

## VI - 2.1 Select the table sets

On the  **Table sets** tab, you can select additional table sets that are also relevant to this system connection in addition to the mandatory table set AUTH. The table sets:

- IBS\_SYSTEM

are provided as predefined additional options.

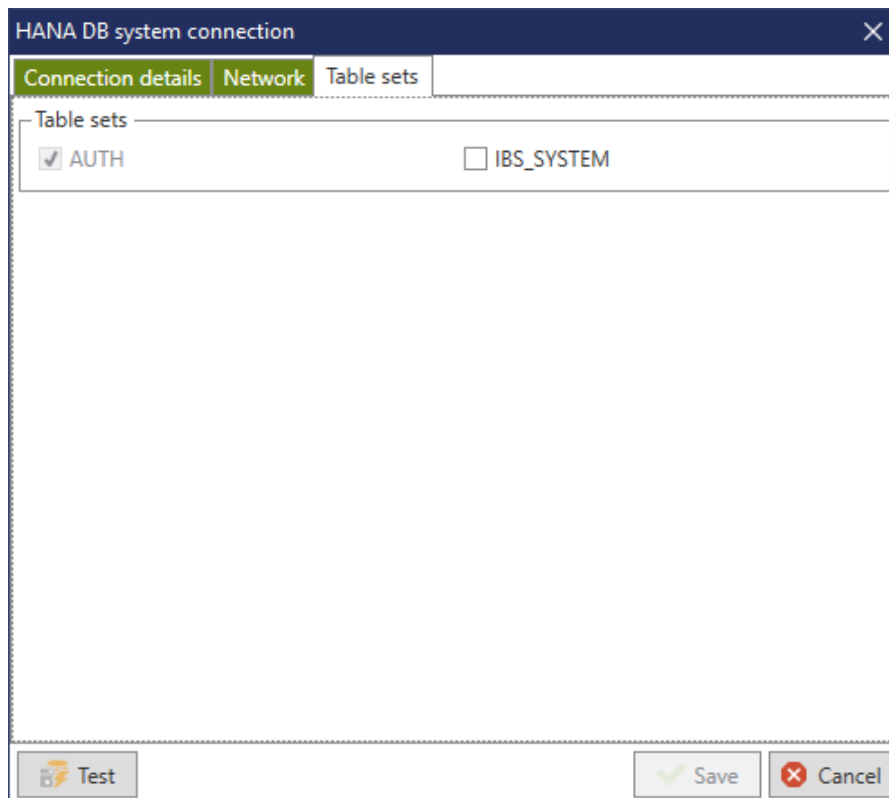


Figure 15 - Selecting additional table sets

### VI - 3 Creating a snapshot (ABAP- & HANA-Scan)

To create snapshots of the required SAP or HANA database source systems, one or more system connections must be marked with a flag in the list or group view:

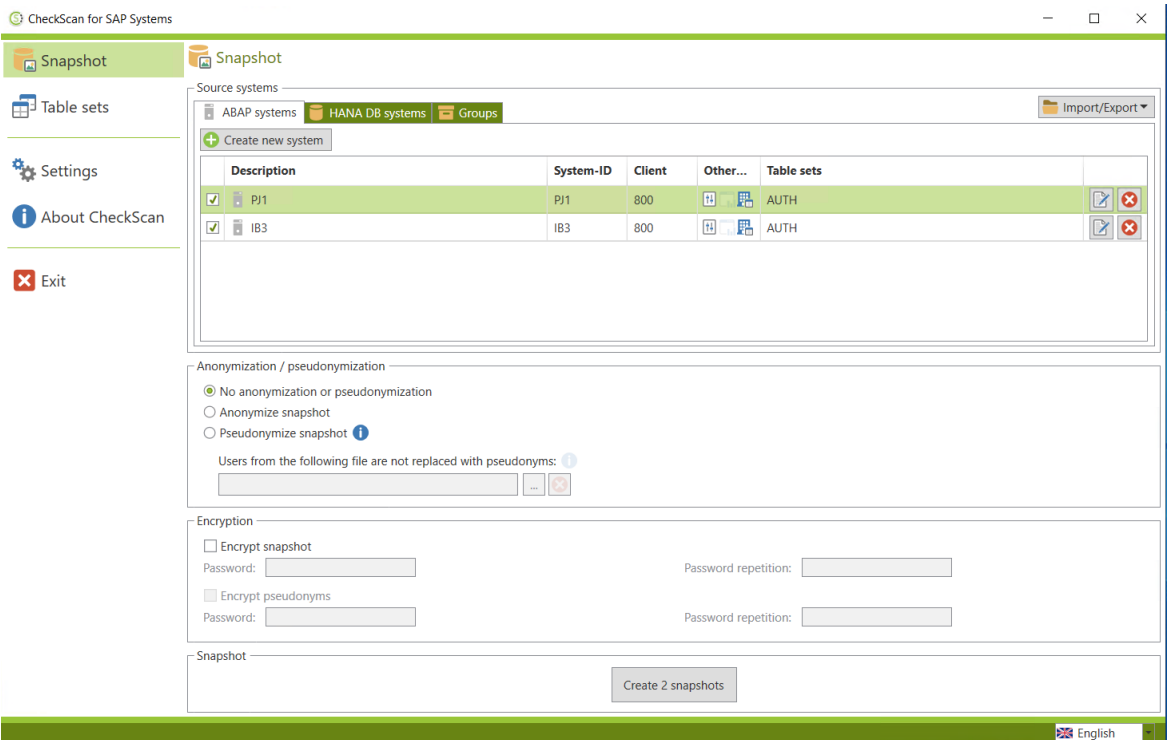


Figure 16 - Systems marked for creating snapshots in the list view

If several systems are marked for snapshots, the scan module reads them out sequentially and the relevant snapshots are saved in the target directory listed.

If necessary, the snapshots can also be encrypted using a password. This password is requested when the snapshot is imported to the evaluation module database.

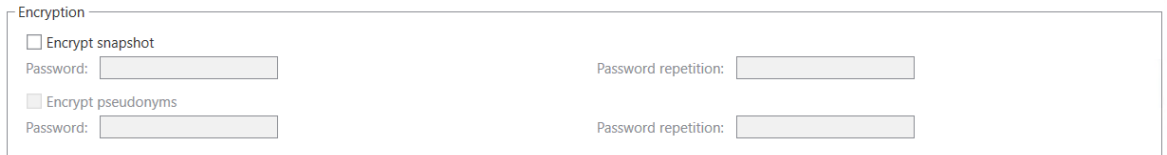


Figure 17 - Optional snapshot encryption

If the "Read all users" option is selected, all users of the ABAP or HANA DB system are listed in the snapshot. On the right side, there are also options for data protection: When anonymizing, the assignment of user names is not possible. They are stored anonymously in the snapshot and it is not possible to infer the original name. In the case of pseudonymization, an additional Excel file is created in addition to the snapshot. The pseudonyms and the corresponding user names are stored in this file, which enables a back translation. If required, this mapping file can also be encrypted to protect personal data.

**Users**

☒ Read all users

☐ User selection *i*

☐ Include SAP standard users *i*

Include ABAP users with these types:

☐ Dialog (A) ☐ System (B) ☐ Communication (C)

☐ Reference (L) ☐ Service (S)

Users specified above are not replaced with pseudonyms.

**Anonymization / pseudonymization**

☐ No anonymization or pseudonymization

☐ Anonymize snapshot

☒ Pseudonymize snapshot *i*

**Encryption**

☐ Encrypt snapshot

Password:

Password repetition:

☒ Encrypt pseudonyms

Password:

Password repetition:

Figure 18 - Selection: All users, pseudonymization, pseudonym encryption

Besides selecting all users, it is also possible to select only a part of them. This part can be composed arbitrarily on the basis of the following user properties:

- Belonging to the ABAP/HANA DB standard users (see *i* for a complete list of all standard users)
- Membership to a specific user type (only for ABAP users)
- Naming of the user name in a stored text file (one name per line)

Example 1: The following figure shows the configuration of a user subset containing only users of the types "System" and "Communication".

**Users**

☐ Read all users

☒ User selection *i*

☐ Include SAP standard users *i*

Include ABAP users with these types:

☐ Dialog (A) ☒ System (B) ☒ Communication (C)

☐ Reference (L) ☐ Service (S)


Users specified above are not replaced with pseudonyms.


Figure 19 - Subset with users of selected user types

Example 2: The following figure shows the configuration of a user subset consisting of all standard users, all users of the types "Dialog" and "Service", and the users named in the text file.

Users

☐ Read all users

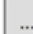

☒ User selection 

☒ Include SAP standard users 

Include ABAP users with these types:

☒ Dialog (A) ☐ System (B) ☐ Communication (C)

☐ Reference (L) ☒ Service (S)

Users specified above are included in the snapshot.

Figure 20 - Subset with users of different properties

To the right of the user selection is a selection option that determines what should happen to the remaining, unselected users. By default, these are skipped during readout and are therefore "not available" in the snapshot.

Anonymization / pseudonymization

Not selected users will be:

☒ not available

☐ anonymized


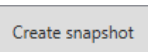
☐ pseudonymized 

Figure 21 - Options for handling unselected users

However, if required, the unselected users can also be included in the snapshot anonymized or pseudonymized.

Choose the



button to create the snapshot. A dialog box for saving the snapshot file opens:

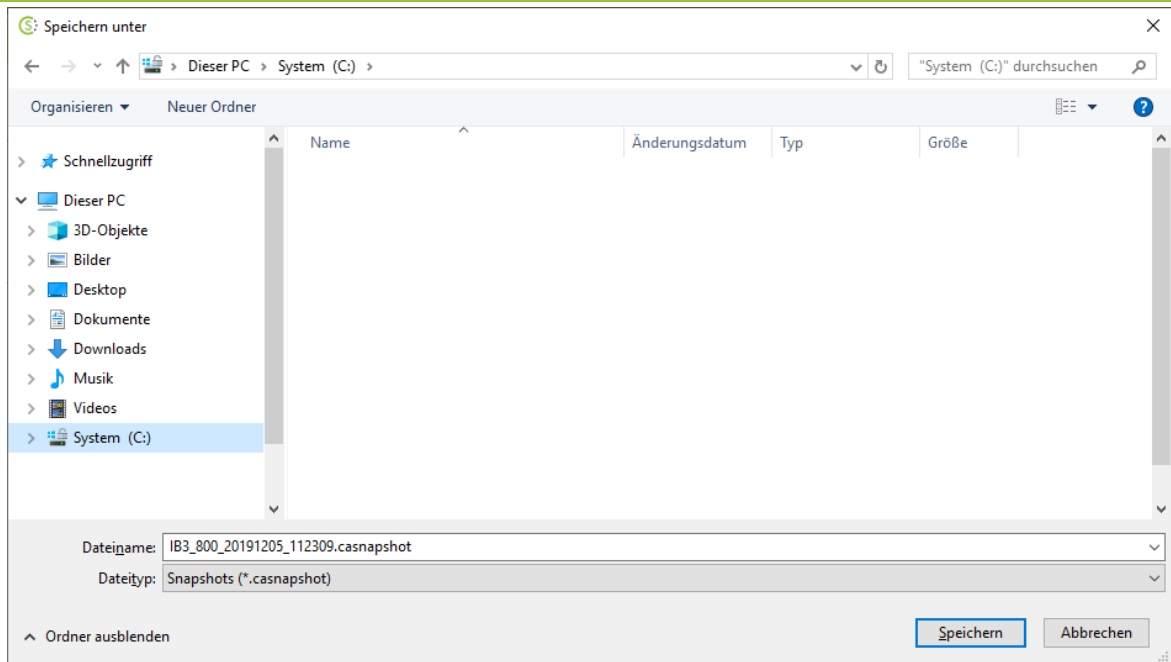


Figure 22 - Standard Windows dialog window for saving the snapshot

The name of the file to be saved is composed as follows:

*SystemID\_Client\_Date\_Time.casnapshot*

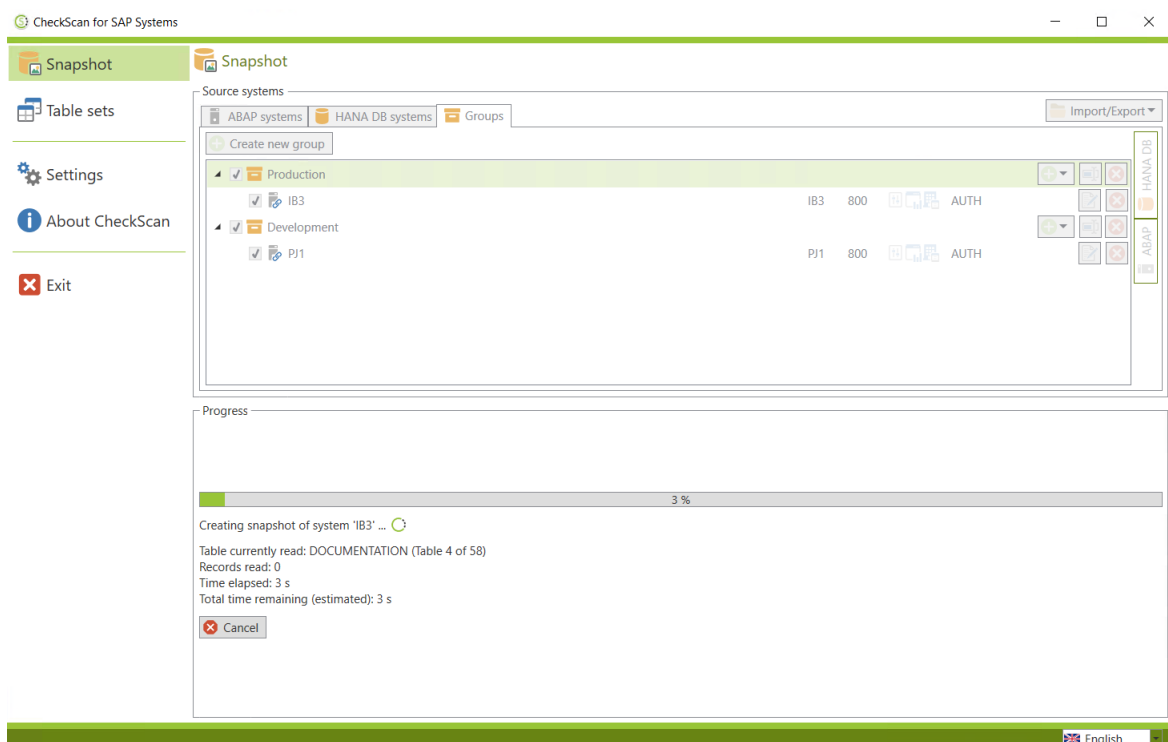


Figure 23 - Scan progress



After you start the scan, the system selection is deactivated and the lower area displays the tables to be scanned and the estimated time required to complete the scan. Once the scan is successfully completed, a results window is displayed:

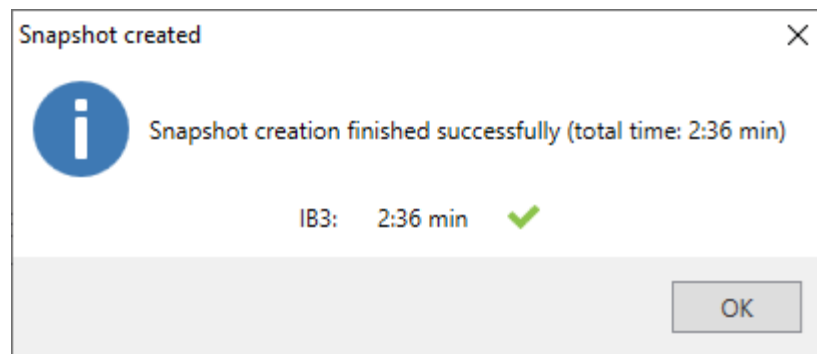



Figure 24 - Results window for the successful scan

**Note:**

A  icon in the results window indicates that some optional tables were not included in the snapshot. However, the snapshot was created successfully. If you place the mouse cursor on the icon that is displayed, a window appears that shows the tables that were skipped in the associated table set.

Please be prepared to deliver the snapshot file (\*.casnapshot) during the presentation via USB flash drive.

**Note:**

The procedure has to be done for ABAP-Scans and HANA-Scans separately. With switching from Tab *ABAP Systems* to *HANA DB Systems* the scans can be started.



## Chapter VII - Technical appendix

## VII Technical appendix

### VII - 1 Property and copyright

All the copyrights to this software belong to

IBS Schreiber GmbH  
Zirkusweg 1  
20359 Hamburg  
Deutschland

HRB Hamburg 60790

### VII - 2 Using the software

A valid licensing agreement with IBS Schreiber GmbH is required to use this software.

### VII - 3 Licenses for third-party providers

This software uses libraries provided by third-party providers under the following licenses.

#### VII - 3.1 RADCONTROLS FOR WPF

©2002-2017 by Telerik Corp.

#### VII - 3.2 EPPLUS

GNU Library General Public License (LGPL)

Version 2.1, February 1999

Copyright (C) 1991, 1999 Free Software Foundation, Inc. 59 Temple Place, Suite 330, Boston, MA 02111-1307 USA Everyone is permitted to copy and distribute verbatim copies of this license document, but changing it is not allowed.

[This is the first released version of the Lesser GPL. It also counts as the successor of the GNU Library Public License, version 2, hence the version number 2.1.]

Preamble

The licenses for most software are designed to take away your freedom to share and change it. By contrast, the GNU General Public Licenses are intended to guarantee your freedom to share and change free software--to make sure the software is free for all its users.

This license, the Lesser General Public License, applies to some specially designated software packages--typically libraries--of the Free Software Foundation and other authors who decide to use it. You can use it too, but we suggest you first think carefully about whether this license or the ordinary General Public License is the better strategy to use in any particular case, based on the explanations below.

When we speak of free software, we are referring to freedom of use, not price. Our General Public Licenses are designed to make sure that you have the freedom to distribute copies of free software (and charge for this service if you wish); that you receive source code or can get it if you want it;

that you can change the software and use pieces of it in new free programs; and that you are informed that you can do these things.

To protect your rights, we need to make restrictions that forbid distributors to deny you these rights or to ask you to surrender these rights. These restrictions translate to certain responsibilities for you if you distribute copies of the library or if you modify it.

For example, if you distribute copies of the library, whether gratis or for a fee, you must give the recipients all the rights that we gave you. You must make sure that they, too, receive or can get the source code. If you link other code with the library, you must provide complete object files to the recipients, so that they can relink them with the library after making changes to the library and recompiling it. And you must show them these terms so they know their rights.

We protect your rights with a two-step method: (1) we copyright the library, and (2) we offer you this license, which gives you legal permission to copy, distribute and/or modify the library.

To protect each distributor, we want to make it very clear that there is no warranty for the free library. Also, if the library is modified by someone else and passed on, the recipients should know that what they have is not the original version, so that the original author's reputation will not be affected by problems that might be introduced by others.

Finally, software patents pose a constant threat to the existence of any free program. We wish to make sure that a company cannot effectively restrict the users of a free program by obtaining a restrictive license from a patent holder. Therefore, we insist that any patent license obtained for a version of the library must be consistent with the full freedom of use specified in this license.

Most GNU software, including some libraries, is covered by the ordinary GNU General Public License. This license, the GNU Lesser General Public License, applies to certain designated libraries, and is quite different from the ordinary General Public License. We use this license for certain libraries in order to permit linking those libraries into non-free programs.

When a program is linked with a library, whether statically or using a shared library, the combination of the two is legally speaking a combined work, a derivative of the original library. The ordinary General Public License therefore permits such linking only if the entire combination fits its criteria of freedom. The Lesser General Public License permits more lax criteria for linking other code with the library.

We call this license the "Lesser" General Public License because it does Less to protect the user's freedom than the ordinary General Public License. It also provides other free software developers Less of an advantage over competing non-free programs. These disadvantages are the reason we use the ordinary General Public License for many libraries. However, the Lesser license provides advantages in certain special circumstances.

For example, on rare occasions, there may be a special need to encourage the widest possible use of a certain library, so that it becomes a de-facto standard. To achieve this, non-free programs must be allowed to use the library. A more frequent case is that a free library does the same job as widely used non-free libraries. In this case, there is little to gain by limiting the free library to free software only, so we use the Lesser General Public License.

In other cases, permission to use a particular library in non-free programs enables a greater number of people to use a large body of free software. For example, permission to use the GNU C Library in non-free programs enables many more people to use the whole GNU operating system, as well as its variant, the GNU/Linux operating system.

Although the Lesser General Public License is Less protective of the users' freedom, it does ensure that the user of a program that is linked with the Library has the freedom and the wherewithal to run that program using a modified version of the Library.

The precise terms and conditions for copying, distribution and modification follow. Pay close attention to the difference between a "work based on the library" and a "work that uses the library". The former contains code derived from the library, whereas the latter must be combined with the library in order to run.

#### TERMS AND CONDITIONS FOR COPYING, DISTRIBUTION AND MODIFICATION

0. This License Agreement applies to any software library or other program which contains a notice placed by the copyright holder or other authorized party saying it may be distributed under the terms of this Lesser General Public License (also called "this License"). Each licensee is addressed as "you".

A "library" means a collection of software functions and/or data prepared so as to be conveniently linked with application programs (which use some of those functions and data) to form executables.

The "Library", below, refers to any such software library or work which has been distributed under these terms. A "work based on the Library" means either the Library or any derivative work under copyright law: that is to say, a work containing the Library or a portion of it, either verbatim or with modifications and/or translated straightforwardly into another language. (Hereinafter, translation is included without limitation in the term "modification".)

"Source code" for a work means the preferred form of the work for making modifications to it. For a library, complete source code means all the source code for all modules it contains, plus any associated interface definition files, plus the scripts used to control compilation and installation of the library.

Activities other than copying, distribution and modification are not covered by this License; they are outside its scope. The act of running a program using the Library is not restricted, and output from such a program is covered only if its contents constitute a work based on the Library (independent of the use of the Library in a tool for writing it). Whether that is true depends on what the Library does and what the program that uses the Library does.

1. You may copy and distribute verbatim copies of the Library's complete source code as you receive it, in any medium, provided that you conspicuously and appropriately publish on each copy an appropriate copyright notice and disclaimer of warranty; keep intact all the notices that refer to this License and to the absence of any warranty; and distribute a copy of this License along with the Library.

You may charge a fee for the physical act of transferring a copy, and you may at your option offer warranty protection in exchange for a fee.

2. You may modify your copy or copies of the Library or any portion of it, thus forming a work based on the Library, and copy and distribute such modifications or work under the terms of Section 1 above, provided that you also meet all of these conditions:

a) The modified work must itself be a software library.

b) You must cause the files modified to carry prominent notices stating that you changed the files and the date of any change.

c) You must cause the whole of the work to be licensed at no charge to all third parties under the terms of this License.

d) If a facility in the modified Library refers to a function or a table of data to be supplied by an application program that uses the facility, other than as an argument passed when the facility is invoked, then you must make a good faith effort to ensure that, in the event an application does not supply such function or table, the facility still operates, and performs whatever part of its purpose remains meaningful.

(For example, a function in a library to compute square roots has a purpose that is entirely well-defined independent of the application. Therefore, Subsection 2d requires that any application-supplied function or table used by this function must be optional: if the application does not supply it, the square root function must still compute square roots.)

These requirements apply to the modified work as a whole. If identifiable sections of that work are not derived from the Library, and can be reasonably considered independent and separate works in themselves, then this License, and its terms, do not apply to those sections when you distribute them as separate works. But when you distribute the same sections as part of a whole which is a work based on the Library, the distribution of the whole must be on the terms of this License, whose permissions for other licensees extend to the entire whole, and thus to each and every part regardless of who wrote it.

Thus, it is not the intent of this section to claim rights or contest your rights to work written entirely by you; rather, the intent is to exercise the right to control the distribution of derivative or collective works based on the Library.

In addition, mere aggregation of another work not based on the Library with the Library (or with a work based on the Library) on a volume of a storage or distribution medium does not bring the other work under the scope of this License.

3. You may opt to apply the terms of the ordinary GNU General Public License instead of this License to a given copy of the Library. To do this, you must alter all the notices that refer to this License, so that they refer to the ordinary GNU General Public License, version 2, instead of to this License. (If a newer version than version 2 of the ordinary GNU General Public License has appeared, then you can specify that version instead if you wish.) Do not make any other change in these notices.

Once this change is made in a given copy, it is irreversible for that copy, so the ordinary GNU General Public License applies to all subsequent copies and derivative works made from that copy.

This option is useful when you wish to copy part of the code of the Library into a program that is not a library.

4. You may copy and distribute the Library (or a portion or derivative of it, under Section 2) in object code or executable form under the terms of Sections 1 and 2 above provided that you accompany it with the complete corresponding machine-readable source code, which must be distributed under the terms of Sections 1 and 2 above on a medium customarily used for software interchange.

If distribution of object code is made by offering access to copy from a designated place, then offering equivalent access to copy the source code from the same place satisfies the requirement to distribute the source code, even though third parties are not compelled to copy the source along with the object code.

5. A program that contains no derivative of any portion of the Library, but is designed to work with the Library by being compiled or linked with it, is called a "work that uses the Library". Such a work, in isolation, is not a derivative work of the Library, and therefore falls outside the scope of this License.

However, linking a "work that uses the Library" with the Library creates an executable that is a derivative of the Library (because it contains portions of the Library), rather than a "work that uses the library". The executable is therefore covered by this License. Section 6 states terms for distribution of such executables.

When a "work that uses the Library" uses material from a header file that is part of the Library, the object code for the work may be a derivative work of the Library even though the source code is not. Whether this is true is especially significant if the work can be linked without the Library, or if the work is itself a library. The threshold for this to be true is not precisely defined by law.

If such an object file uses only numerical parameters, data structure layouts and accessors, and small macros and small inline functions (ten lines or less in length), then the use of the object file is unrestricted, regardless of whether it is legally a derivative work. (Executables containing this object code plus portions of the Library will still fall under Section 6.)

Otherwise, if the work is a derivative of the Library, you may distribute the object code for the work under the terms of Section 6. Any executables containing that work also fall under Section 6, whether or not they are linked directly with the Library itself.

6. As an exception to the Sections above, you may also combine or link a "work that uses the Library" with the Library to produce a work containing portions of the Library, and distribute that work under terms of your choice, provided that the terms permit modification of the work for the customer's own use and reverse engineering for debugging such modifications.

You must give prominent notice with each copy of the work that the Library is used in it and that the Library and its use are covered by this License. You must supply a copy of this License. If the work during execution displays copyright notices, you must include the copyright notice for the Library among them, as well as a reference directing the user to the copy of this License. Also, you must do one of these things:

a) Accompany the work with the complete corresponding machine-readable source code for the Library including whatever changes were used in the work (which must be distributed under Sections 1 and 2 above); and, if the work is an executable linked with the Library, with the complete machine-readable "work that uses the Library", as object code and/or source code, so that the user can modify the Library and then relink to produce a modified executable containing the modified Library. (It is understood that the user who changes the contents of definitions files in the Library will not necessarily be able to recompile the application to use the modified definitions.)

b) Use a suitable shared library mechanism for linking with the Library. A suitable mechanism is one that (1) uses at run time a copy of the library already present on the user's computer system, rather than copying library functions into the executable, and (2) will operate properly with a modified version of the library, if the user installs one, as long as the modified version is interface-compatible with the version that the work was made with.

c) Accompany the work with a written offer, valid for at least three years, to give the same user the materials specified in Subsection 6a, above, for a charge no more than the cost of performing this distribution.

d) If distribution of the work is made by offering access to copy from a designated place, offer equivalent access to copy the above specified materials from the same place.

e) Verify that the user has already received a copy of these materials or that you have already sent this user a copy.

For an executable, the required form of the "work that uses the Library" must include any data and utility programs needed for reproducing the executable from it. However, as a special exception, the



materials to be distributed need not include anything that is normally distributed (in either source or binary form) with the major components (compiler, kernel, and so on) of the operating system on which the executable runs, unless that component itself accompanies the executable.

It may happen that this requirement contradicts the license restrictions of other proprietary libraries that do not normally accompany the operating system. Such a contradiction means you cannot use both them and the Library together in an executable that you distribute.

7. You may place library facilities that are a work based on the Library side-by-side in a single library together with other library facilities not covered by this License, and distribute such a combined library, provided that the separate distribution of the work based on the Library and of the other library facilities is otherwise permitted, and provided that you do these two things:

a) Accompany the combined library with a copy of the same work based on the Library, uncombined with any other library facilities. This must be distributed under the terms of the Sections above.

b) Give prominent notice with the combined library of the fact that part of it is a work based on the Library, and explaining where to find the accompanying uncombined form of the same work.

8. You may not copy, modify, sublicense, link with, or distribute the Library except as expressly provided under this License. Any attempt otherwise to copy, modify, sublicense, link with, or distribute the Library is void, and will automatically terminate your rights under this License. However, parties who have received copies, or rights, from you under this License will not have their licenses terminated so long as such parties remain in full compliance.

9. You are not required to accept this License, since you have not signed it. However, nothing else grants you permission to modify or distribute the Library or its derivative works. These actions are prohibited by law if you do not accept this License. Therefore, by modifying or distributing the Library (or any work based on the Library), you indicate your acceptance of this License to do so, and all its terms and conditions for copying, distributing or modifying the Library or works based on it.

10. Each time you redistribute the Library (or any work based on the Library), the recipient automatically receives a license from the original licensor to copy, distribute, link with or modify the Library subject to these terms and conditions. You may not impose any further restrictions on the recipients' exercise of the rights granted herein. You are not responsible for enforcing compliance by third parties with this License.

11. If, as a consequence of a court judgment or allegation of patent infringement or for any other reason (not limited to patent issues), conditions are imposed on you (whether by court order, agreement or otherwise) that contradict the conditions of this License, they do not excuse you from the conditions of this License. If you cannot distribute so as to satisfy simultaneously your obligations under this License and any other pertinent obligations, then as a consequence you may not distribute the Library at all. For example, if a patent license would not permit royalty-free redistribution of the Library by all those who receive copies directly or indirectly through you, then the only way you could satisfy both it and this License would be to refrain entirely from distribution of the Library.

If any portion of this section is held invalid or unenforceable under any particular circumstance, the balance of the section is intended to apply, and the section as a whole is intended to apply in other circumstances.

It is not the purpose of this section to induce you to infringe any patents or other property right claims or to contest validity of any such claims; this section has the sole purpose of protecting the integrity of the free software distribution system which is implemented by public license practices.

Many people have made generous contributions to the wide range of software distributed through that system in reliance on consistent application of that system; it is up to the author/donor to decide if he or she is willing to distribute software through any other system and a licensee cannot impose that choice.

This section is intended to make thoroughly clear what is believed to be a consequence of the rest of this License.

12. If the distribution and/or use of the Library is restricted in certain countries either by patents or by copyrighted interfaces, the original copyright holder who places the Library under this License may add an explicit geographical distribution limitation excluding those countries, so that distribution is permitted only in or among countries not thus excluded. In such case, this License incorporates the limitation as if written in the body of this License.

13. The Free Software Foundation may publish revised and/or new versions of the Lesser General Public License from time to time. Such new versions will be similar in spirit to the present version, but may differ in detail to address new problems or concerns.

Each version is given a distinguishing version number. If the Library specifies a version number of this License which applies to it and "any later version", you have the option of following the terms and conditions either of that version or of any later version published by the Free Software Foundation. If the Library does not specify a license version number, you may choose any version ever published by the Free Software Foundation.

14. If you wish to incorporate parts of the Library into other free programs whose distribution conditions are incompatible with these, write to the author to ask for permission. For software which is copyrighted by the Free Software Foundation, write to the Free Software Foundation; we sometimes make exceptions for this. Our decision will be guided by the two goals of preserving the free status of all derivatives of our free software and of promoting the sharing and reuse of software generally.

#### NO WARRANTY

15. BECAUSE THE LIBRARY IS LICENSED FREE OF CHARGE, THERE IS NO WARRANTY FOR THE LIBRARY, TO THE EXTENT PERMITTED BY APPLICABLE LAW. EXCEPT WHEN OTHERWISE STATED IN WRITING THE COPYRIGHT HOLDERS AND/OR OTHER PARTIES PROVIDE THE LIBRARY "AS IS" WITHOUT WARRANTY OF ANY KIND, EITHER EXPRESSED OR IMPLIED, INCLUDING, BUT NOT LIMITED TO, THE IMPLIED WARRANTIES OF MERCHANTABILITY AND FITNESS FOR A PARTICULAR PURPOSE. THE ENTIRE RISK AS TO THE QUALITY AND PERFORMANCE OF THE LIBRARY IS WITH YOU. SHOULD THE LIBRARY PROVE DEFECTIVE, YOU ASSUME THE COST OF ALL NECESSARY SERVICING, REPAIR OR CORRECTION.

16. IN NO EVENT UNLESS REQUIRED BY APPLICABLE LAW OR AGREED TO IN WRITING WILL ANY COPYRIGHT HOLDER, OR ANY OTHER PARTY WHO MAY MODIFY AND/OR REDISTRIBUTE THE LIBRARY AS PERMITTED ABOVE, BE LIABLE TO YOU FOR DAMAGES, INCLUDING ANY GENERAL, SPECIAL, INCIDENTAL OR CONSEQUENTIAL DAMAGES ARISING OUT OF THE USE OR INABILITY TO USE THE LIBRARY (INCLUDING BUT NOT LIMITED TO LOSS OF DATA OR DATA BEING RENDERED INACCURATE OR LOSSES SUSTAINED BY YOU OR THIRD PARTIES OR A FAILURE OF THE LIBRARY TO OPERATE WITH ANY OTHER SOFTWARE), EVEN IF SUCH HOLDER OR OTHER PARTY HAS BEEN ADVISED OF THE POSSIBILITY OF SUCH DAMAGES.

## VII - 3.3DOTNETZIP

### Microsoft Public License (Ms-PL)

This license governs use of the accompanying software. If you use the software, you accept this license. If you do not accept the license, do not use the software.

#### 1. Definitions

The terms "reproduce," "reproduction," "derivative works," and "distribution" have the same meaning here as under U.S. copyright law.

A "contribution" is the original software, or any additions or changes to the software.

A "contributor" is any person that distributes its contribution under this license.

"Licensed patents" are a contributor's patent claims that read directly on its contribution.

#### 2. Grant of Rights

(A) Copyright Grant- Subject to the terms of this license, including the license conditions and limitations in section 3, each contributor grants you a non-exclusive, worldwide, royalty-free copyright license to reproduce its contribution, prepare derivative works of its contribution, and distribute its contribution or any derivative works that you create.

(B) Patent Grant- Subject to the terms of this license, including the license conditions and limitations in section 3, each contributor grants you a non-exclusive, worldwide, royalty-free license under its licensed patents to make, have made, use, sell, offer for sale, import, and/or otherwise dispose of its contribution in the software or derivative works of the contribution in the software.

#### 3. Conditions and Limitations

(A) No Trademark License- This license does not grant you rights to use any contributors' name, logo, or trademarks.

(B) If you bring a patent claim against any contributor over patents that you claim are infringed by the software, your patent license from such contributor to the software ends automatically.

(C) If you distribute any portion of the software, you must retain all copyright, patent, trademark, and attribution notices that are present in the software.

(D) If you distribute any portion of the software in source code form, you may do so only under this license by including a complete copy of this license with your distribution. If you distribute any portion of the software in compiled or object code form, you may only do so under a license that complies with this license.

(E) The software is licensed "as-is." You bear the risk of using it. The contributors give no express warranties, guarantees or conditions. You may have additional consumer rights under your local laws which this license cannot change. To the extent permitted under your local laws, the contributors exclude the implied warranties of merchantability, fitness for a particular purpose and non-infringement.

### VII - 3.4ANTLR 3

[The BSD License]  
Copyright (c) 2010 Terence Parr  
All rights reserved.

Redistribution and use in source and binary forms, with or without modification, are permitted provided that the following conditions are met:

Redistributions of source code must retain the above copyright notice, this list of conditions and the following disclaimer.

Redistributions in binary form must reproduce the above copyright notice, this list of conditions and the following disclaimer in the documentation and/or other materials provided with the distribution.

Neither the name of the author nor the names of its contributors may be used to endorse or promote products derived from this software without specific prior written permission.

THIS SOFTWARE IS PROVIDED BY THE COPYRIGHT HOLDERS AND CONTRIBUTORS "AS IS" AND ANY EXPRESS OR IMPLIED WARRANTIES, INCLUDING, BUT NOT LIMITED TO, THE IMPLIED WARRANTIES OF MERCHANTABILITY AND FITNESS FOR A PARTICULAR PURPOSE ARE DISCLAIMED. IN NO EVENT SHALL THE COPYRIGHT OWNER OR CONTRIBUTORS BE LIABLE FOR ANY DIRECT, INDIRECT, INCIDENTAL, SPECIAL, EXEMPLARY, OR CONSEQUENTIAL DAMAGES (INCLUDING, BUT NOT LIMITED TO, PROCUREMENT OF SUBSTITUTE GOODS OR SERVICES; LOSS OF USE, DATA, OR PROFITS; OR BUSINESS INTERRUPTION) HOWEVER CAUSED AND ON ANY THEORY OF LIABILITY, WHETHER IN CONTRACT, STRICT LIABILITY, OR TORT (INCLUDING NEGLIGENCE OR OTHERWISE) ARISING IN ANY WAY OUT OF THE USE OF THIS SOFTWARE, EVEN IF ADVISED OF THE POSSIBILITY OF SUCH DAMAGE.

### VII - 3.5NPGSQL

Copyright (c) 2002-2010, The Npgsql Development Team

Permission to use, copy, modify, and distribute this software and its documentation for any purpose, without fee, and without a written agreement is hereby granted, provided that the above copyright notice and this paragraph and the following two paragraphs appear in all copies.

IN NO EVENT SHALL THE NPQSGL DEVELOPMENT TEAM BE LIABLE TO ANY PARTY FOR DIRECT, INDIRECT, SPECIAL, INCIDENTAL, OR CONSEQUENTIAL DAMAGES, INCLUDING LOST PROFITS, ARISING OUT OF THE USE OF THIS SOFTWARE AND ITS DOCUMENTATION, EVEN IF THE NPQSGL DEVELOPMENT TEAM HAS BEEN ADVISED OF THE POSSIBILITY OF SUCH DAMAGE.

THE NPQSGL DEVELOPMENT TEAM SPECIFICALLY DISCLAIMS ANY WARRANTIES, INCLUDING, BUT NOT LIMITED TO, THE IMPLIED WARRANTIES OF MERCHANTABILITY AND FITNESS FOR A PARTICULAR PURPOSE. THE SOFTWARE PROVIDED HEREUNDER IS ON AN "AS IS" BASIS, AND THE NPQSGL DEVELOPMENT TEAM HAS NO OBLIGATIONS TO PROVIDE MAINTENANCE, SUPPORT, UPDATES, ENHANCEMENTS, OR MODIFICATIONS.

### VII - 3.6PROTOBUF-NET

The core Protocol Buffers technology is provided courtesy of Google.  
At the time of writing, this is released under the BSD license.  
Full details can be found here:

<http://code.google.com/p/protobuf/>

This .NET implementation is Copyright 2008 Marc Gravel

Licensed under the Apache License, Version 2.0 (the "License");  
you may not use this file except in compliance with the License.  
You may obtain a copy of the License at

<http://www.apache.org/licenses/LICENSE-2.0>

Unless required by applicable law or agreed to in writing, software  
distributed under the License is distributed on an "AS IS" BASIS,  
WITHOUT WARRANTIES OR CONDITIONS OF ANY KIND, either express or implied.  
See the License for the specific language governing permissions and  
limitations under the License.

## VII - 3.7 MATH.NET NUMERICS LICENSE (MIT/X11)

Copyright (c) 2002-2017 Math.NET

Permission is hereby granted, free of charge, to any person obtaining a copy of this software and associated documentation files (the "Software"), to deal in the Software without restriction, including without limitation the rights to use, copy, modify, merge, publish, distribute, sublicense, and/or sell copies of the Software, and to permit persons to whom the Software is furnished to do so, subject to the following conditions:

The above copyright notice and this permission notice shall be included in all copies or substantial portions of the Software.

THE SOFTWARE IS PROVIDED "AS IS", WITHOUT WARRANTY OF ANY KIND, EXPRESS OR IMPLIED, INCLUDING BUT NOT LIMITED TO THE WARRANTIES OF MERCHANTABILITY, FITNESS FOR A PARTICULAR PURPOSE AND NONINFRINGEMENT. IN NO EVENT SHALL THE AUTHORS OR COPYRIGHT HOLDERS BE LIABLE FOR ANY CLAIM, DAMAGES OR OTHER LIABILITY, WHETHER IN AN ACTION OF CONTRACT, TORT OR OTHERWISE, ARISING FROM, OUT OF OR IN CONNECTION WITH THE SOFTWARE OR THE USE OR OTHER DEALINGS IN THE SOFTWARE.

## VII - 3.8 IQToolkit

IQToolkit  
Microsoft Public License (Ms-PL)

This license governs use of the accompanying software. If you use the software, you accept this license. If you do not accept the license, do not use the software.

### 1. Definitions

The terms "reproduce," "reproduction," "derivative works," and "distribution" have the same meaning here as under U.S. copyright law.

A "contribution" is the original software, or any additions or changes to the software.

A "contributor" is any person that distributes its contribution under this license.

"Licensed patents" are a contributor's patent claims that read directly on its contribution.

## 2. Grant of Rights

(A) Copyright Grant- Subject to the terms of this license, including the license conditions and limitations in section 3, each contributor grants you a non-exclusive, worldwide, royalty-free copyright license to reproduce its contribution, prepare derivative works of its contribution, and distribute its contribution or any derivative works that you create.

(B) Patent Grant- Subject to the terms of this license, including the license conditions and limitations in section 3, each contributor grants you a non-exclusive, worldwide, royalty-free license under its licensed patents to make, have made, use, sell, offer for sale, import, and/or otherwise dispose of its contribution in the software or derivative works of the contribution in the software.

## 3. Conditions and Limitations

(A) No Trademark License- This license does not grant you rights to use any contributors' name, logo, or trademarks.

(B) If you bring a patent claim against any contributor over patents that you claim are infringed by the software, your patent license from such contributor to the software ends automatically.

(C) If you distribute any portion of the software, you must retain all copyright, patent, trademark, and attribution notices that are present in the software.

(D) If you distribute any portion of the software in source code form, you may do so only under this license by including a complete copy of this license with your distribution. If you distribute any portion of the software in compiled or object code form, you may only do so under a license that complies with this license.

(E) The software is licensed "as-is." You bear the risk of using it. The contributors give no express warranties, guarantees or conditions. You may have additional consumer rights under your local laws which this license cannot change. To the extent permitted under your local laws, the contributors exclude the implied warranties of merchantability, fitness for a particular purpose and non-infringement.

## VII - 3.9Newtonsoft.Json (MIT)

Newtonsoft.Json (MIT)  
The MIT License (MIT)

Copyright (c) 2007 James Newton-King

Permission is hereby granted, free of charge, to any person obtaining a copy of this software and associated documentation files (the "Software"), to deal in the Software without restriction, including without limitation the rights to use, copy, modify, merge, publish, distribute, sublicense, and/or sell copies of the Software, and to permit persons to whom the Software is furnished to do so, subject to the following conditions:

The above copyright notice and this permission notice shall be included in all copies or substantial portions of the Software.

THE SOFTWARE IS PROVIDED "AS IS", WITHOUT WARRANTY OF ANY KIND, EXPRESS OR IMPLIED, INCLUDING BUT NOT LIMITED TO THE WARRANTIES OF MERCHANTABILITY, FITNESS FOR A PARTICULAR PURPOSE AND NONINFRINGEMENT. IN NO EVENT SHALL THE AUTHORS OR COPYRIGHT HOLDERS BE LIABLE FOR ANY CLAIM, DAMAGES OR OTHER LIABILITY, WHETHER IN AN ACTION OF CONTRACT, TORT OR OTHERWISE, ARISING FROM,

OUT OF OR IN CONNECTION WITH THE SOFTWARE OR THE USE OR OTHER DEALINGS IN THE SOFTWARE.





## Chapter VIII - Liability

## VIII Liability

© 2023 IBS Schreiber GmbH. All rights reserved.

The information contained in the publication may change without prior notice. The information at hand has been provided by IBS Schreiber GmbH and serves the purpose of information only. IBS Schreiber GmbH assumes no liability or warranty for any errors or incomplete information in this publication. The only warranties for IBS Schreiber GmbH products and services are those that are set forth in the express warranty statements accompanying such products and services, if any. The information contained in this publication shall entail no further liability.

CheckAud® is a registered trademark of IBS Schreiber GmbH. SAP is a trademark or registered trademark of SAP AG in Germany and other countries worldwide. Microsoft, Windows, Windows Server, Windows XP, Windows Vista, Windows 7 and Windows 8 are trademarks or registered trademarks of Microsoft Corporation or its subsidiaries in the U.S.A. and other countries.